



## Wettability and Adhesion of Real Surfaces

Join us for a 2 hour seminar about Wettability and Adhesion, where we will go through the common ways of measuring these properties. We will also address the theory behind them and emphasize strategies how to apply these measurements to real, non-ideal surfaces which may be heterogeneous in both surface chemistry and surface roughness. Wettability and adhesion are key parameters in numerous industries such as coatings, biotechnology and electronics. The seminar will include lecture and a demonstration of how to account for the surface roughness and wettability determination for advanced research.

Correlating surface roughness to wettability in an automated measurement.

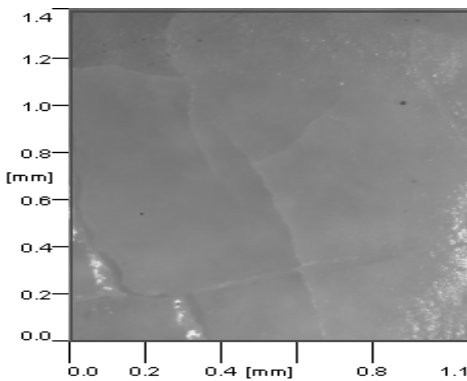


Image1: Bare tooth

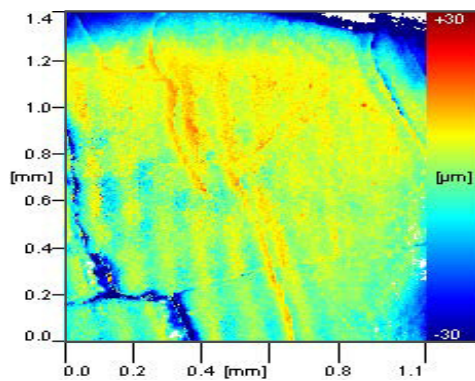


Image2: 2D Image of the surface

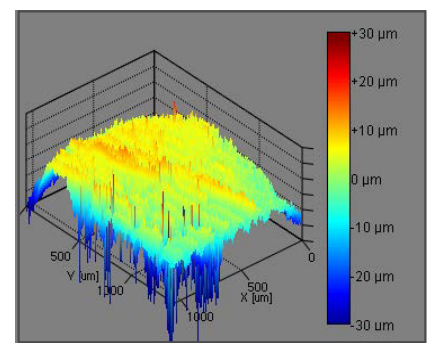


Image3: 3D Image of the surface

**September 14th**  
(10:00AM)

Long Island, NY  
Stony Brook University

**September 21st**  
(10:00AM)

Chicago  
Courtyard Chicago  
Deerfield

**September 15th**  
(10:00AM)

Boston  
Boston University

**September 26th**  
(11:00AM)

Los Angeles  
Pomona College,  
Claremont, CA

**September 20th**  
(10:00AM)

Minneapolis  
Augsburg College

**September 28th**  
(10:00AM)

Cupertino  
Courtyard San Jose Cupertino  
Santa Clara, CA

Interested to learn more? Download our White Paper on Surface Roughness and Wettability:  
<http://www.biolinscientific.com/product/theta-topography/>



Biolin Scientific AB,  
215 College Road, suite 300  
Paramus, NJ 07652

Phone: +1 877-773-6730  
E-mail: [us@biolinscientific.com](mailto:us@biolinscientific.com)  
[www.biolinscientific.com](http://www.biolinscientific.com)

For more information: Scott Allan  
Phone: +1201273 4184  
E-mail: [Scott.Allan@biolinscientific.com](mailto:Scott.Allan@biolinscientific.com)